

EXCLUSIVE LISTING

The 1063 - 1063 Justin Avenue, Glendale, CA 91201

±5.20% CAP Rate in North Glendale, Excellent Unit Mix + Large Units, Turnkey Fully Upgraded,
Class A Location, Well Maintained + Excellent Curb Appeal



Property Overview

Subject Property:	1063 Justin Ave, Glendale, CA 91201
Price:	\$5,600,000
Price Per Unit:	\$467,000
Year Built/Renovated:	1963/2022-2023
Building/Lot Size:	9,196 SF / 7,324 SF
APN#:	5623-026-040
Number of Units:	12
Unit Mix:	4 x 2B+1B 6 x 1B+1B 2 x STUDIO

Investment Highlights

- Over 5% CAP Rate in north Glendale, within walking distance to Burbank Downtown
- Turnkey, Fully Upgraded apartment units with High/attractive CAP Rate and upside potential.
- One of the highest CAP Rate apartments offering in north Glendale
- Year 2 CAP Rate close to 6% with annual rent increase
- Highest allowable rent increase (Under Glendale rent ordinance and AB1482- maximum 10%)
- Excellent demographics with ±\$106,786 average household income (1 mile radius)
- WALKSCORE 86 (very walkable)
- Luxury Pride-of-ownership apartment community with ease of maintenance
- Easy access to the 5 FWY, 134 FWY, and Downtown Los Angeles
- Located within the highly desirable Glendale Unified School District
- Perfect 1031 Exchange property

Property Highlights

- Excellent unit mix with excellent distributions of large 2bed and 1bed units
- Units are large with excellent layout (1 unit has private balcony)
- Luxury upgrades in each unit complete with in-unit laundry, new kitchen, new bathroom, and much more.
- Well-maintained property with no known deferred maintenance
- Excellent unit mix with large and spacious unit and good unit layout; Some 1bed units can be easily converted into 2bed units.
- Extra space next to garage area that is perfect for several self-storage cabinets for additional income.
- Completely renovated in 2021-2023
- Excellent amenities: gated parking, secured entrance, electronic RFI unit locks, fully upgraded units with high-end finishes.
- Top-down renovation have been completed including exterior and interior upgrades.
- Separately metered for electricity and gas, recently replaced master water heater, additional laundry room

EXCLUSIVE LISTING

The 1063 - 1063 Justin Avenue, Glendale, CA 91201

±5.20% CAP Rate in North Glendale, Excellent Unit Mix + Large Units, Turnkey Fully Upgraded,
Class A Location, Well Maintained + Excellent Curb Appeal



GROWTH INVESTMENT GROUP



Exclusively Listed By:

HAN WIDJAJA CHEN

626.594.4900

han.chen@growthinvestmentgroup.com

Broker License# 01749321

EXCLUSIVE LISTING

The 1063 - 1063 Justin Avenue, Glendale, CA 91201

±5.20% CAP Rate in North Glendale, Excellent Unit Mix + Large Units, Turnkey Fully Upgraded,
Class A Location, Well Maintained + Excellent Curb Appeal



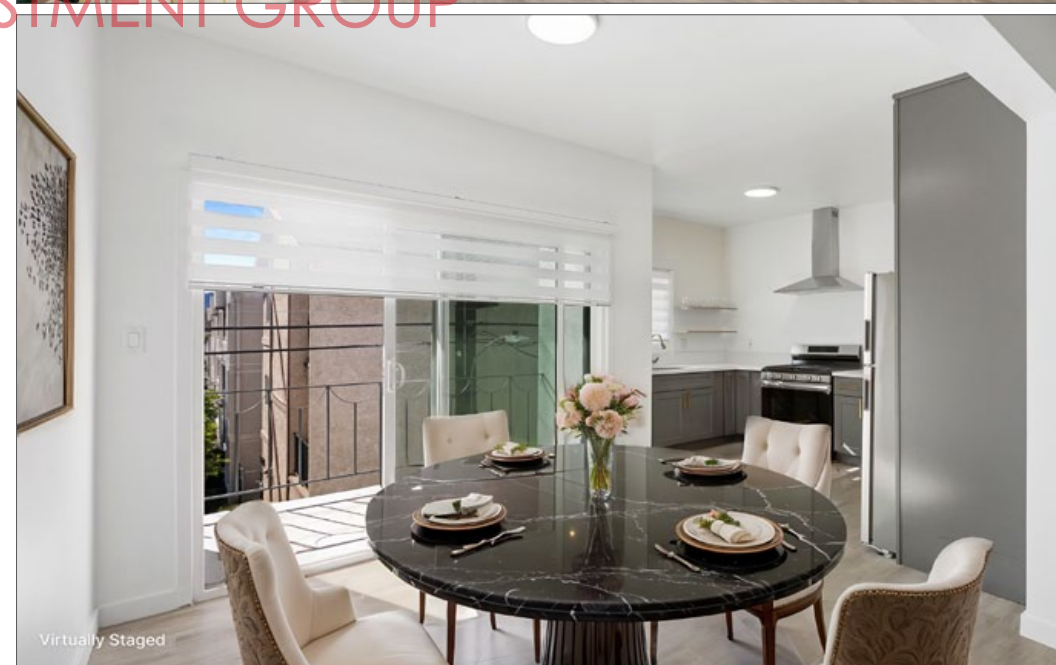
GROWTH INVESTMENT GROUP



EXCLUSIVE LISTING

The 1063 - 1063 Justin Avenue, Glendale, CA 91201

±5.20% CAP Rate in North Glendale, Excellent Unit Mix + Large Units, Turnkey Fully Upgraded,
Class A Location, Well Maintained + Excellent Curb Appeal



GROWTH INVESTMENT GROUP

EXCLUSIVE LISTING

The 1063 - 1063 Justin Avenue, Glendale, CA 91201

±5.20% CAP Rate in North Glendale, Excellent Unit Mix + Large Units, Turnkey Fully Upgraded, Class A Location, Well Maintained + Excellent Curb Appeal



BURBANK TOWN CENTER



DOWNTOWN BURBANK



1063 JUSTIN AVE

GLENOAKS BLVD.

Walk Score
86
Very Walkable
Most errands can be accomplished on foot.

GROWTH INVESTMENT GROUP

EXCLUSIVE LISTING

The 1063 - 1063 Justin Avenue, Glendale, CA 91201

±5.20% CAP Rate in North Glendale, Excellent Unit Mix + Large Units, Turnkey Fully Upgraded,
Class A Location, Well Maintained + Excellent Curb Appeal



Walk Score
86

Very Walkable

Most errands can be accomplished on foot.

